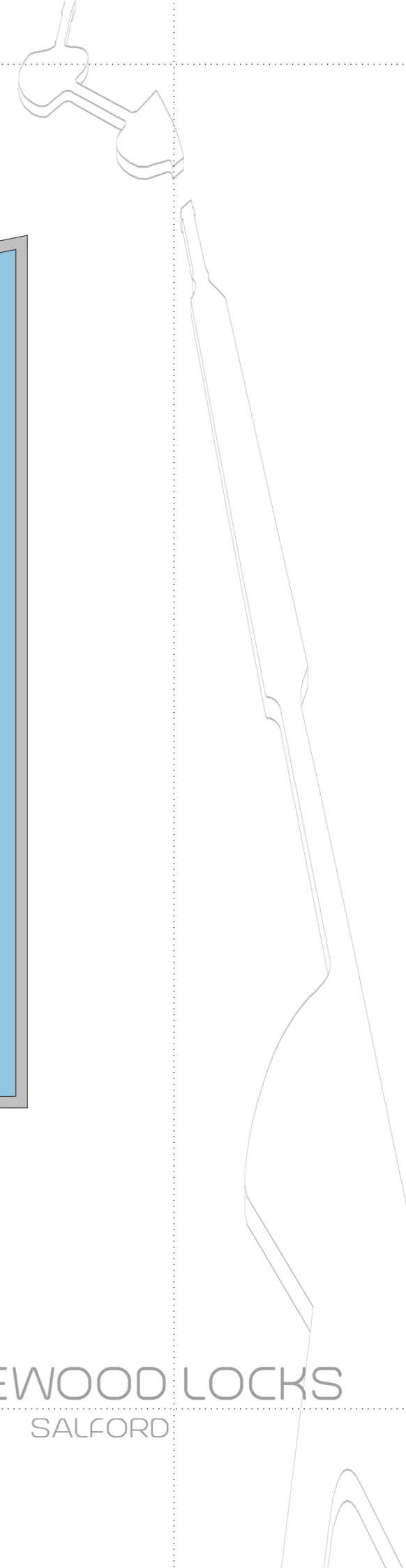
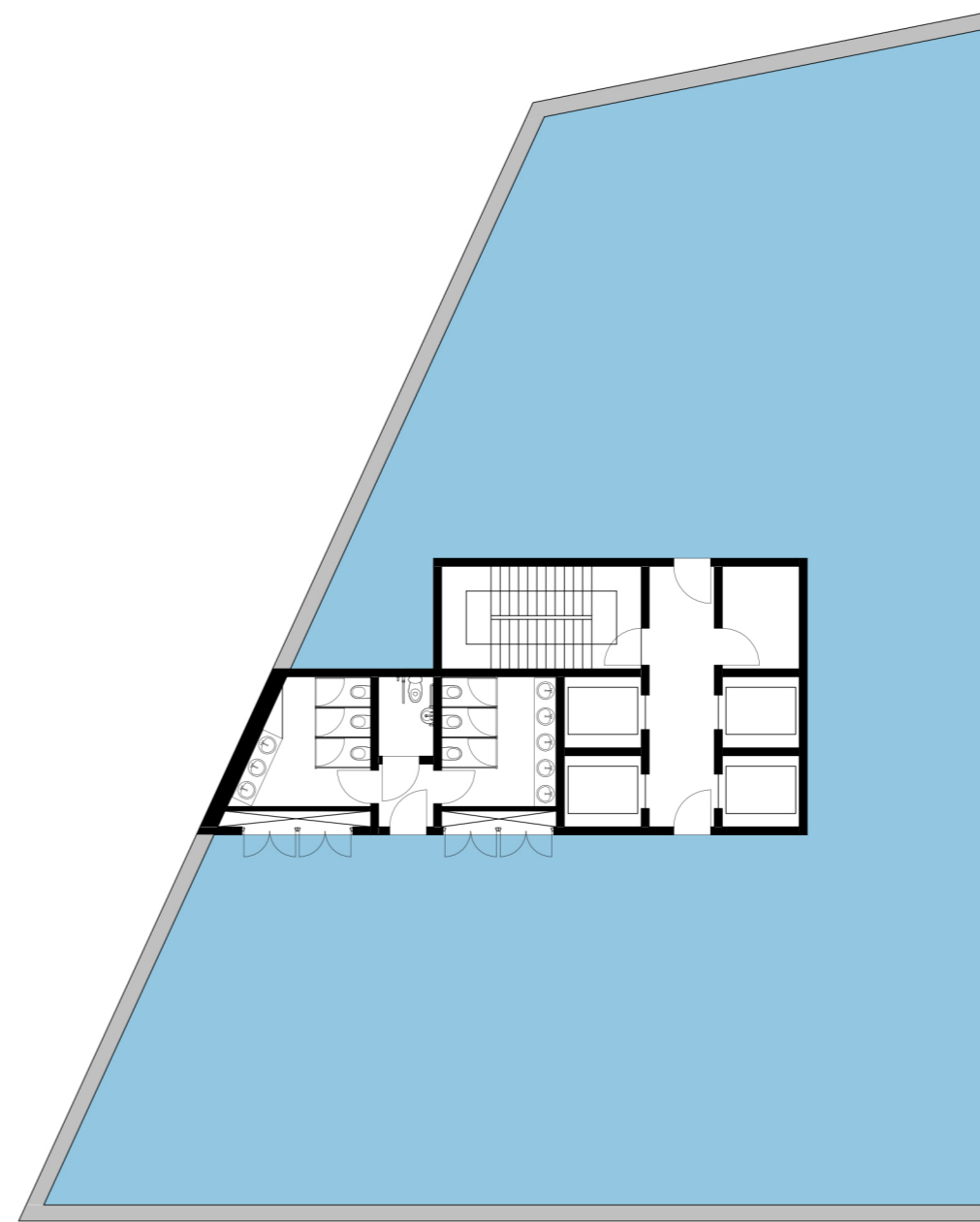
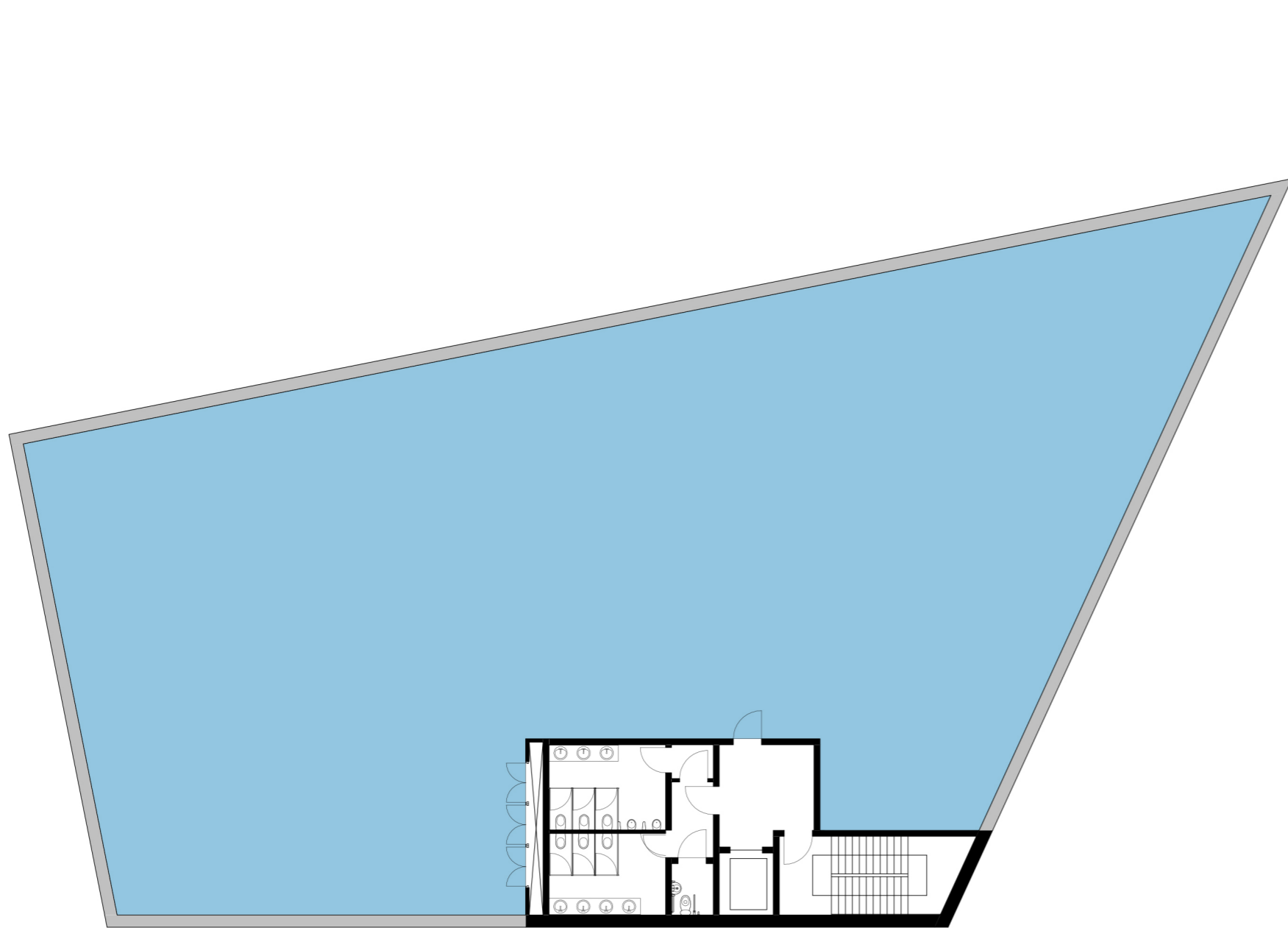


eighteenth to twenty fifth floor plan, 1:200 @ A3

18 to 25 Storey Office Development to Plot A at approximately 430,000 sq ft GIA

NOTE:
This drawing is sketch feasibility only and as such everything indicated, including areas, is subject to further detailed verification.

MIDDLEWOOD LOCKS
SALFORD

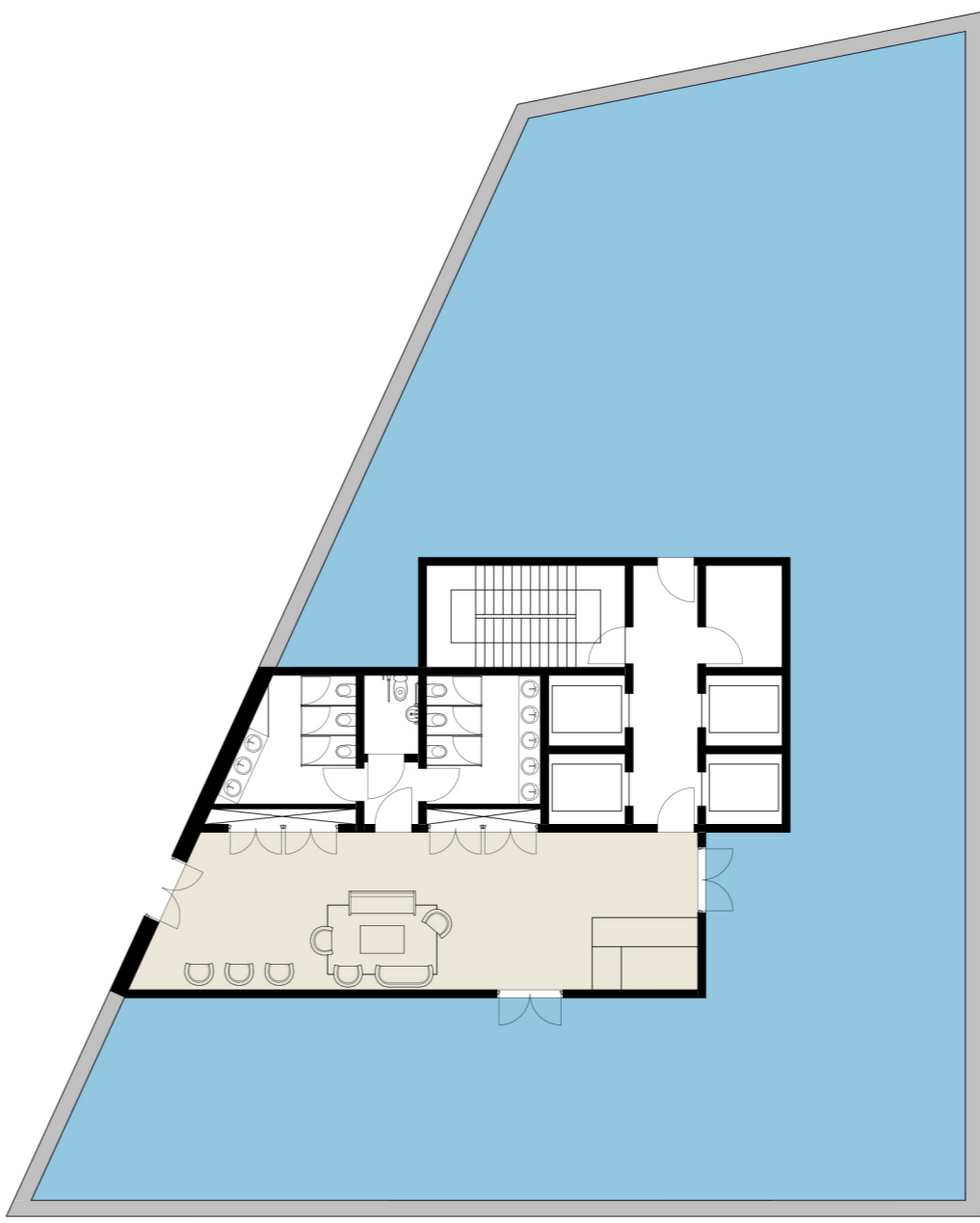
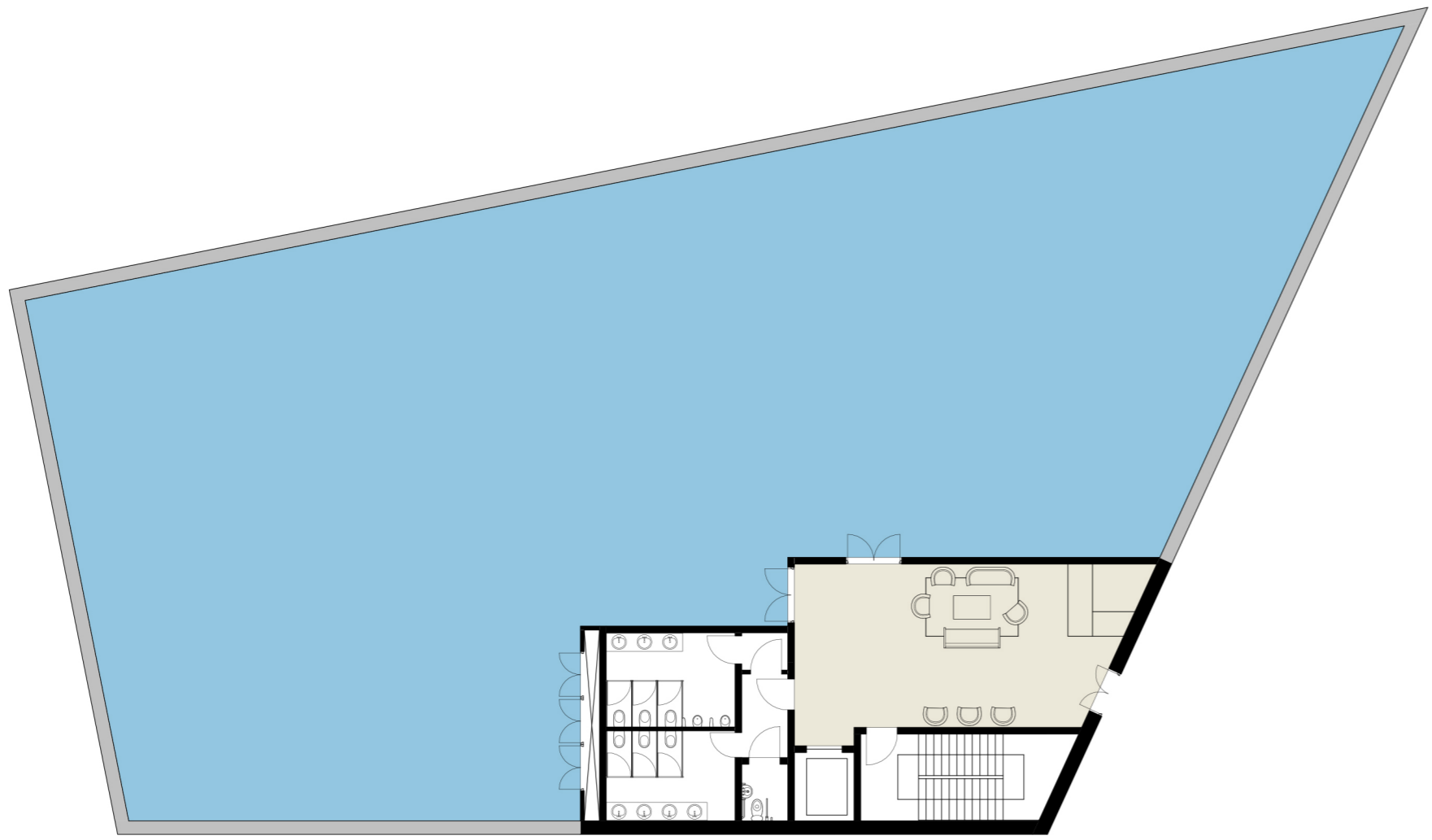


first & second floor plan, 1:200 @ A3

18 to 25 Storey Office Development to Plot A at approximately 430,000 sq ft GIA

NOTE:
This drawing is sketch feasibility only and as such everything indicated, including areas, is subject to further detailed verification.

MIDDLEWOOD LOCKS
SALFORD

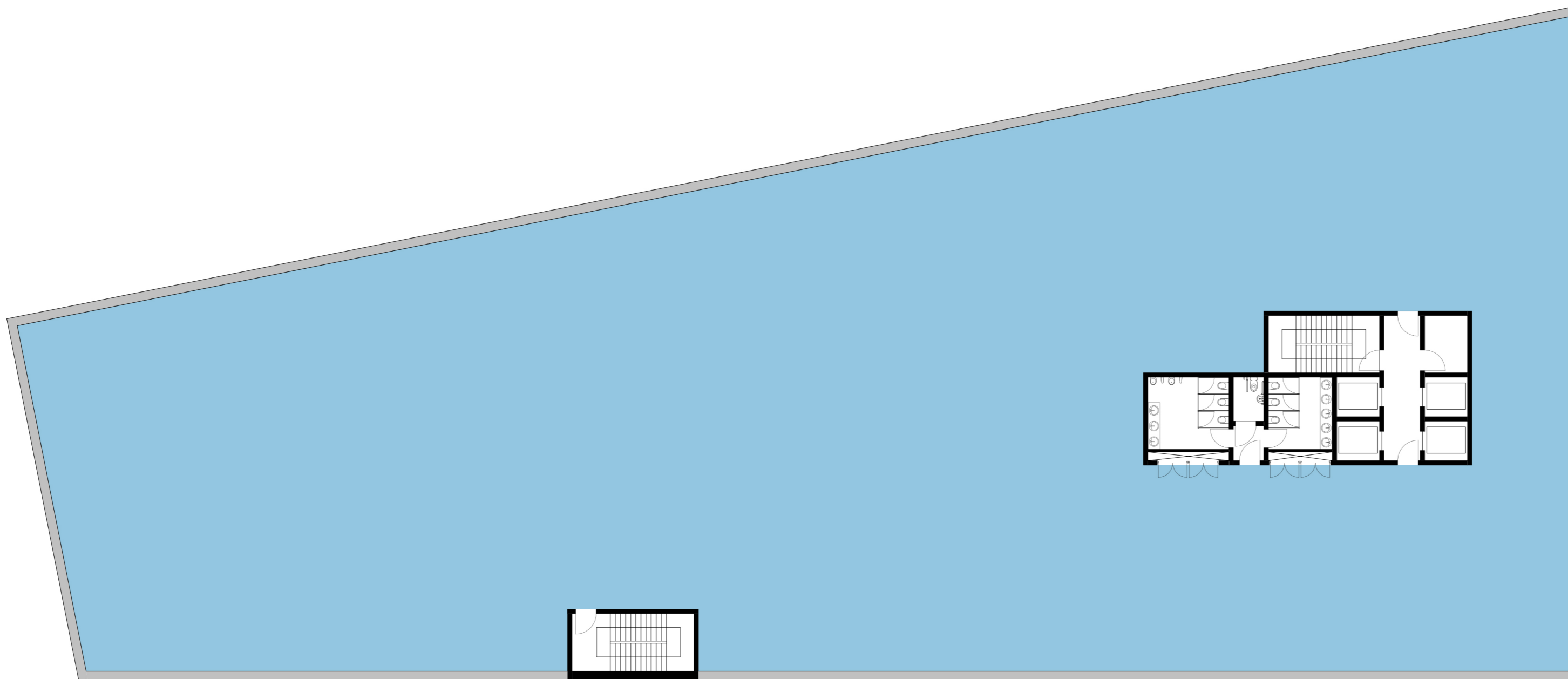


ground floor plan, 1:200 @ A3

18 to 25 Storey Office Development to Plot A at approximately 430,000 sq ft GIA

NOTE:
This drawing is sketch feasibility only and as such everything indicated, including areas, is subject to further detailed verification.

MIDDLEWOOD LOCKS
SALFORD



third to seventeenth floor plan, 1:200 @ A3

18 to 25 Storey Office Development to Plot A at approximately 430,000 sq ft GIA

NOTE:
This drawing is sketch feasibility only and as such everything indicated, including areas, is subject to further detailed verification.

MIDDLEWOOD LOCKS
SALFORD